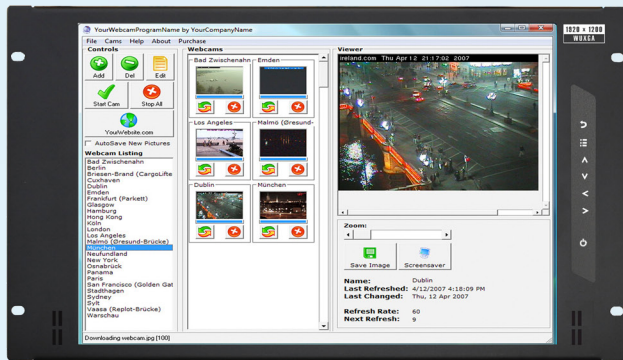


XMP-17

6U 17" High Resolution
LCD Monitor Panel



Generation 4

General Information

Form Factor	: 6U Rackmount
Mounting Type	: 2 Post/Cabinet
Model Version	: Generation 4 (Gen4)
Color	: Black (Custom Available)
Hardware Supported	: Multi-Platform
Regulatory Approval	: CE, FCC
Warranty	: 2 Years (Extended Available)

LCD

Display Size	: 17.1" Widescreen
Ratio	: 16:10
LCD Manufacturer	: LG
LCD Type	: Grade A Industrial TFT LCD Panel
Backlighting	: LED
Resolution	: 1920x1200
Display Color	: 16.7M
Brightness	: 210 cd/m ²
Contrast Ratio	: 600:1 typical
Viewing Angle	: 130° / 110°
Active Area	: 367 x 230 mm
Signal Input	: VGA, DVI-D, HDMI; Optional BNC, SDI
Touch-Screen	: Optional e-Resistive or Capacitive
MTBF	: 20,000 hours

Power Adapter

Input	: 100-240VAC~1.5A Max 50/60Hz
Output	: 12V~4.0A
Consumption	: Max 48 Watts
Internal/External	: External via Brick/Barrel Connector
Optional DC	: 12V / 24V / 48V DC Input Available

Environmental

Temperature	: 0 to 50 Degree Celsius (Operation) : -5 to 60 Degree Celsius (Storage)
Relative Humidity	: 5~90%, Non-Condensing
Shock	: 10G Acceleration (11ms Dur, Half Sine)
Vibration	: 5~500Hz 1G RMS Random Vibration

Dimensions & Weight

XMP-17	: 18.9" W x 10.5" (6U) H x 1.9" D; 10 lbs.
--------	--



ECLIPSE RACKMOUNT
INDUSTRIAL RACKMOUNT PROFESSIONALS

Eclipse Rackmount, Inc.

(888) ECL-RACK (325-7225) | (415) 895-1570 Direct | (415) 727-4000 FAX