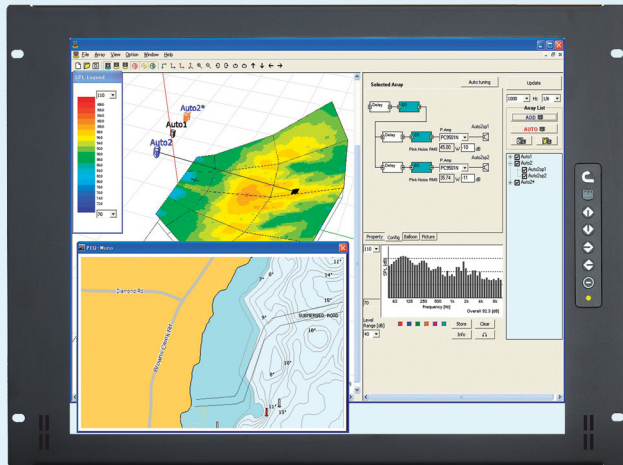


# MP-19

8U 19" LCD Monitor Panel



## Generation 4

### General Information

Form Factor	: 8U Rackmount
Mounting Type	: 2 Post/Cabinet
Model Version	: Generation 4 (Gen4)
Color	: Black (Custom Available)
Hardware Supported	: Multi-Platform
Regulatory Approval	: CE, FCC
Warranty	: 2 Years (Extended Available)

### LCD

Display Size	: 19" Diagonal
Ratio	: 4:3
LCD Manufacturer	: Samsung
LCD Type	: Grade A Industrial TFT LCD Panel
Backlighting	: Cold Cathode Fluorescent Lamp (CCFL)
Resolution	: 1280x1024
Display Color	: 16.7M
Brightness	: 250 cd/m <sup>2</sup>
Contrast Ratio	: 1000:1 typical
Viewing Angle	: 160° / 160°
Active Area	: 376 x 301 mm
Signal Input	: VGA, DVI-D; Optional HDMI, BNC, SDI
Touch-Screen	: Optional e-Resistive or Capacitive
MTBF	: 50,000 hours

### Optional Quad Display

Imaging System	: NTSC or PAL
Resolution	: 1024x525 NTSC / 1024x625 PAL
Refresh Rate	: 60 Hz NTSC / 50 Hz PAL
Camera Title	: 8 Characters
Dwell Time	: 0 to 99 Seconds (Adjustable)
Display Formats	: 2x Zoom on Playback, Quad, Full, Sequence
Features	: Auto Gain Control, Time/Date, On-Screen : Display, Internal Buzzer, Key Lock

### VIDEO INPUT (QD)

Camera Input	: 1.0 Vpp, 75 ohm x 4
VCR Input	: 1.0 Vpp, 75 ohm x 1

### VIDEO OUTPUT (QD)

Live Monitor	: 1.0 Vpp, 75 ohm x 1
Loop Through/Out	: 1.0 Vpp, 75 ohm x 4
VCR Output	: 1.0 Vpp, 75 ohm x 1

### Power Adapter

Input	: 100-240VAC~1.5A Max 50/60Hz
Output	: 12V~4.0A
Consumption	: Max 48 Watts
Internal/External	: External via Brick/Barrel Connector
Optional DC	: 12V / 24V / 48V DC Input Available

### Environmental

Temperature	: 0 to 50 Degree Celsius (Operation) : -5 to 60 Degree Celsius (Storage)
Relative Humidity	: 5~90%, Non-Condensing
Shock	: 10G Acceleration (11ms Dur, Half Sine)
Vibration	: 5~500Hz 1G RMS Random Vibration

### Dimensions & Weight

MP-19	: 18.9" W x 14" (8U) H x 2.1" D; 15 lbs.
-------	--

FCC

CE

**ECLIPSE RACKMOUNT**  
INDUSTRIAL RACKMOUNT PROFESSIONALS

Eclipse Rackmount, Inc.

(888) ECL-RACK (325-7225) | (415) 895-1570 Direct | (415) 727-4000 FAX